



Korea's Cross-Country Cycling Road

<http://www.bike.go.kr>



MINISTRY OF
SECURITY AND
PUBLIC ADMINISTRATION

Seoul Government Complex. 3FL., 60 Sazicro 8gil, Jongno-gu, Seoul, 110-787, Republic of Korea



On two wheels ~ Cross-Country Cycling Road

The starting point of the Cross-Country Cycling Road that passes through the entire Korean territory is ARA bicycle path in direct contact with the West Sea.

Major cycling roads that make up the Cross-Country Cycling Road are ARA bicycle path(21km), Seoul section of HANGANG(riv.) bicycle path(56km), NAMHANGANG(riv.) bicycle path(132km), SAEJAE bicycle path(100km) that connects Chungju Tangeumdae and Sangju through Ihwaryeong, and NAKDONGGANG(riv.) bicycle path(324km) that ends at Busan NAKDONGGANG Estuary Bank.

GEUMGANG(riv.) bicycle path(146km) reaching from Daecheongdam to GEUMGANG Estuary Bank and YEONGSANGANG(riv.) bicycle path (133km) that runs by YEONGSANGANG(riv.) from Damyangdam to YEONGSANGANG Estuary Bank are also main arteries of the Cycling Road across Korea that function as a hub of the land, connecting many different regions of Korea like a spider web.

In addition, when BUKHANGANG(riv.) bicycle path(70km) and SEOMJINGANG(riv.) bicycle path(180km) that are currently being constructed and National Network of Cycling Road links Eastern Coast, Western Coast, Southern Coast and DMZ in all four directions by 2019, Korea will join the ranks of advanced cycling country.

Along the Cross-Country Cycling Road that connects the nation in all directions, Theme bicycle path created with themes of each region's history, nature, culture, ecology and many more interesting topics offer families special places for few hours of relaxing trip on a bike.

Korea's Cross-Country Cycling Road is not a route for professional race or an intense competition. It is a route for learning to talk to wild flowers on the way and for enjoying the meditation by the sunset river. It is also for adventurous travelers who don't mind eating unfamiliar menus of different regions and staying at a new place with people they have never met.

Those who want to find a reason of sudden tears in their eyes by the sunset river should hit the Cross-Country Cycling Road to find the freedom.

On two wheels~

Cross-Country Cycling Road Map





Cycling by Ara waterway where the promise of thousand years flow with the river

ARA Bicycle Path



ARA West Sea lock gate~ARA HANGANG lock gate 21km / 1hr 30min

Cross-Country Cycling Road starts at Incheon West Sea lock gate informing 'the Great Voyage'. This 21km of ARA bicycle path, known as 'the fantastic cycling road' by the riders and Gyeong-In ARA waterway that brings West Sea and HANGANG(riv.) together, are located side by side.

Unlike most other bicycle path made by paving a weir or connecting already existing streets, ARA bicycle path is designed to be a road for cycling only from the beginning, allowing the road to be straight without any sharp curve or hill. There are also a number of perfect places for riders to relax on the way.

Cycling at the resting place of the citizens

HANGANG_(riv.) Bicycle Path (Seoul Section)

Seoul is the heart of Korea and Han River is the aorta penetrating the heart. Han River has been flowing together with 600 years history of Korea's Capital, Seoul, and it also has been the land mark of Korea. Knowing the meaning of Han River, Cycling along this lifeline where the 'miracle of Han River' was born is ever more dynamic and touching at the same time.

Skyscrapers and bridges of Han River pass by as pedals are worked, and ferries and yachts of gorgeous colors on the river will not let riders' eyes off of them. Sceneries of the sunset and night views of Han River make the Thames of London or the Seine of the Paris colorless.

ARAHANGANG Lock Gate~The Southern End of Yeouido Seongangdaegyo(Bridge)~
[Ttukseom Observation Complex or Gwangnaru Bicycle Park]~Paldangdaegyo(bridge) 56km / 3hr 40min





Cycling the disused railroad of awesome views **NAMHANGANG_(riv.) Bicycle Path**



Paldang Bridge~Neungnae Station~Bukhangang Railroad Bridge~Yangpyeong Art Museum~Ipobo~Yeoju~Gangcheonbo~Suhaeng Bridge~Chungju Tangeumdae 132km / 8hr 50min

Starting at Paldang Bridge, Namhangang(riv.) bicycle path cuts through the picturesque villages of Namyangju, Yangpyeong, Yeosu, Wonju, Chungju and finishes its 132km of journey at Chungju Tangeumdae.

Dumulmeori and other natural attractions along with historic sites such as Dasan Jeong Yak-yong's site make the Namhangang bicycle path a living historical and natural museum. Plus, Ipobo, Yeosu and Gangcheonbo add on to the picturesqueness of the Namhangang.

Namhangang_(riv.)'s magnificent view along the disused railroad of Central line

27km length of disused railroad of the Central line from Namyangju Paldang to Yangpyeong is known as the most beautiful bicycle path of the country. Cemented cycling road built between rusty railroad runs through tunnels and by the riverside, meeting anamnesic whistle stops that are now serving as rest stops on the way.

First 'must see' spot on the disused railroad section of the Namhangang(riv.) bicycle path is the Bongan tunnel of 260m length. This is where Mugunghwa train used to run through to get to the famous Jeongdongjin station from old drama 'Sandglass'. Now the whistle of the train is gone, but the smooth curve of the tunnel greets with the light when bikes come in a line like the train used to.





Cycling along a beautiful mountain and lake **BUCKHANGANG_(riv.) Bicycle Path**



Balgeun Gwangjang~Saeteo Samgeori~Kyunggang Bridge~
Sinmae Bridge 70.4km / 8hr 50min

The 70.4km long Buekhangang(riv.) Bicycle Path links Seoul and Chuncheon in Gangwon Province. Passing through the Uiamho-lake, Ungil-mountain, and Chukryeong-mountain areas, you can enjoy this beautiful scenic bicycle path.

The disused Gyeongchun-railroad(opened in 1939 and closed 20 Dec. 2010) can make tourists think of their own past.

Cycling across the Korean peninsula,
linking Hangang and Nakdonggang

SAEJAE Bicycle Path

Saejae bicycle path is the toughest course climbing over Bakdudaegan Ihwaryeong. It's the one and only section of cycling route that goes over a steep hill and it requires riders to have much patience and strength.

There are resting areas along the Saejae bicycle path every 1km for riders to recharge their energy with fresh air of the mountain breeze. Safety structure at the cliff section of the road is built with thinning-out tree, which used to be firewood, to protect the environment while promoting safety of the riders.



Chungju Tangeumdae~
Suanbo Oncheon~
Ihwaryeong Rest Area~
Mungyeong Buljeong Station~
Sangju Sangpung Bridge
100km / 6hr 40min



Cycling the road looking for the root of life

NAKDONGGANG_(riv.) Bicycle Path

Cycling road along the Nakdonggang(riv.) starting at Andongdam meets Saejae bicycle path at Sangju Sangpung Bridge and changes its name to the Nakdonggang bicycle path of the cycling road across Korea. Nakdonggang(riv.) rises from Hwangji pond of the Taebaek in Gangwon Province and runs right by the Yeongdong line through the wild of Bonghwa in Gyeongsangbuk Province, where anything other than the train rarely gets to.

The civilization of the mankind originated from the river. Accordingly, Nakdonggang bicycle path that runs by the river has many historic sites to visit. 324km of this bicycle path of the cultural heritage from Sangju Sangpung Bridge to Nakdonggang Estuary Bank in Busan brings down the curtain on the cycling tour across the country with welcoming seagulls of Busan.



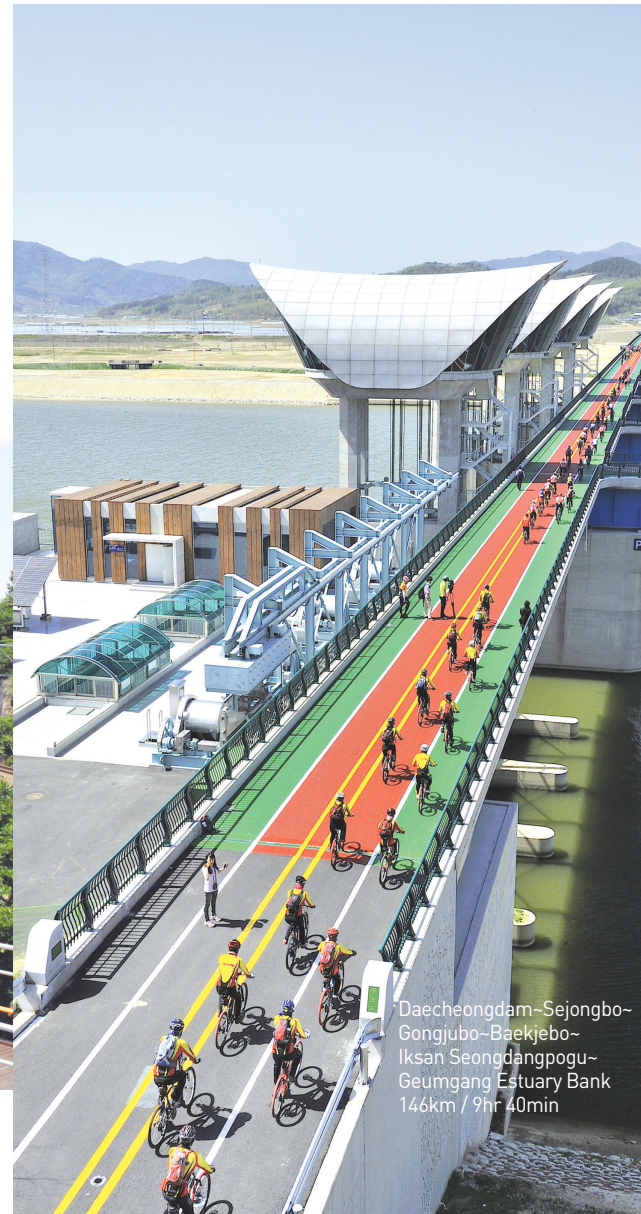
Sangju Sangpung Bridge~
Sangjubo~Nakdanbo~
Gumibo~Chilgokbo~Gangjeonggoryeongbo~
Dalseongbo~Hapcheon Changnyeongbo~
Changnyeong Hammanbo~
Yangsang Water Culture Center~
Nakdonggang Estuary Bank
324km / 21hr 30min

Cycling through the culture and ecology of Silk River Road

GEUMGANG_(riv.) Bicycle Path

Geumgang(riv.), risen from Ttunbong Spring of Jangsu County in Jeonbuk Province, runs through Muju Gucheondong and Okcheon 'Jiyong's Nostalgia Road' and takes a brief rest at Daecheongho. Then gets back on the road passing the waist of Korean peninsula, Gongju and Buyeo and jumps into the arms of the West Sea at Geumgang Estuary Bank where Gunsan and Seochon greets one another.

Geumgang bicycle path, though which riders take a trip to Baekje of 1500 years ago, encounters Geumgang at Daejeon's Daecheongdam. Geumgang bicycle path is a thrilling course from the beginning at Daecheongdam, because the deck bicycle path constructed by putting piles on the side of 2 lane road by the cliff is winding for 3km of the course. The deck's height is about 70~80m, allowing riders to experience the timelessness of flowing river under their feet and the picturesqueness of a willow tree growing at the cliff.



Daecheongdam~Sejongbo~
Gongjubo~Baekjebo~
Iksan Seongdangpogu~
Geumgang Estuary Bank
146km / 9hr 40min



Cycling into the poetic landscape

YEONGSANGANG_(riv.) Bicycle Path



Damyangdam-Metasequoia-Damyang Bamboo Forest-Seungchonbo-Juksanbo-Neureoji Observatory-Yeongsangang Estuary Bank 133km / 8hr 50min

Yeongsangang(riv.) is the lifeline of the Southern Province risen from Yongso of Yongchu valley in Damyang County. Yeongsangang runs into the West Sea, joining the tributaries such as Hwangryonggang, Jiseokcheon, Gomagwoncheon on the way.

133km of Yeongsangang bicycle path is built along the Yeongsangang and it gets on to the river bank at the Daesung Bridge below the Damyangho. Until it reaches the Yeongsangang Estuary at Mokpo, the road stays free and easy throughout its wonderful journey in Southern provinces.

Cycling through a folksy atmosphere and natural ecology

SEOMJINGANG_(riv.) Bicycle Path



Seomjingangdam-Hyangga Park-Sasung Temple-Baealdo Waterfront Park 154km/10hr

Seomjingang(riv.) rises from Palgongsan(mt.) and flows for 212.3 kilometers before reaching its final destination in Gwangyang, where it enters Gwangyang Bay.

154km of Seomjingang Bicycle Path includes both farmland and a great deal of pristine mountain country, including the Jirisan(mt.) area. A wide variety of animals are found along the river including otter and others.

Along the Seomjingang Bicycle Path, you can feel such a beautiful natural ecology and a folksy atmosphere.

Cross-Country Cycling Road Certification System

What is the Cross-Country Cycling Road Certification System?



Make the most out of your bicycle journey along the Cross-Country Cycling Road of Korea, and keep souvenir from it that will remind you of its beautiful memories. The certification stamps will help you to remember every place you have visited along the way. Let this journey be one that will never be forgotten.

What are certification Centers?



When riding along the river on the cross-country cycling road, you will probably come across some red booths that look just like telephone booths. A certification center for what, you wonder? The booth holds stamps for you to stamp on the cycling road tour certification passport, to certify that you made it to that location. After stamping all, you may submit it to the certification center. Passports can be purchased at most certification centers(for 3,000won), but be sure to check just in case

The best souvenir for your journey



There are total of 45 certification centers, and if you collect all 45 stamps you will be awarded with a certification sticker, medal, and a certificate for your completion of the full cross-country bicycle course.

 You can check the details on the website(www.bike.go.kr/en)

